



University Services

CLICK ON A DEPARTMENT BELOW TO VIEW ITS ORGANIZATION CHART

[Office of the Vice President](#)

[Campus Dining](#)

[Campus Support Services](#)

[Conference & Event Services](#)

[Housing & Real Estate Services](#)

[Print, Mail, & Trademark Licensing Services](#)


[The Service Point/
TigerCard](#)



[Transportation & Parking Services](#)

[University Services Administration](#)

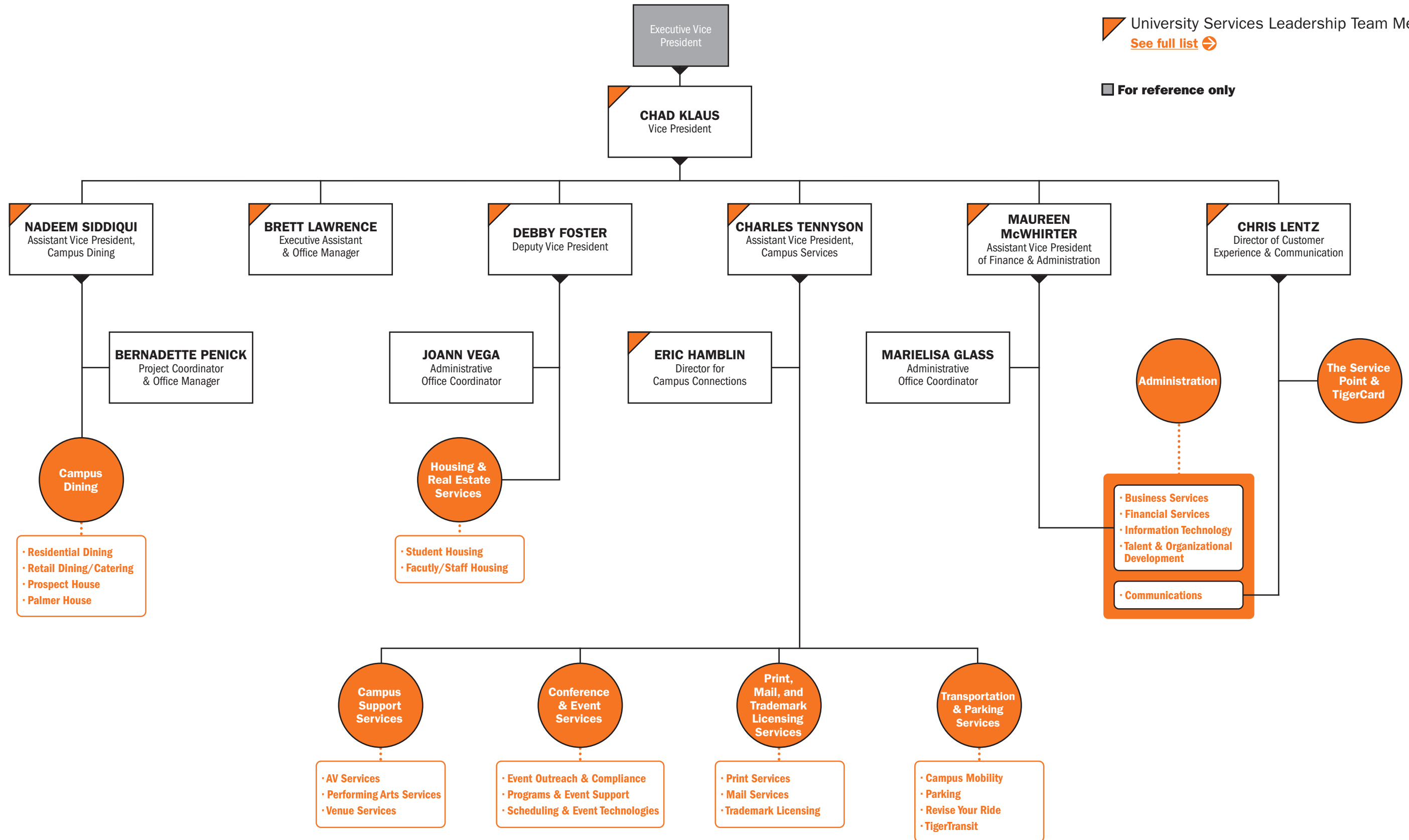
[UNIVERSITY SERVICES LEADERSHIP TEAM DIRECTORY](#)

Office of the Vice President

 University Services department
Click to see department-level organization chart

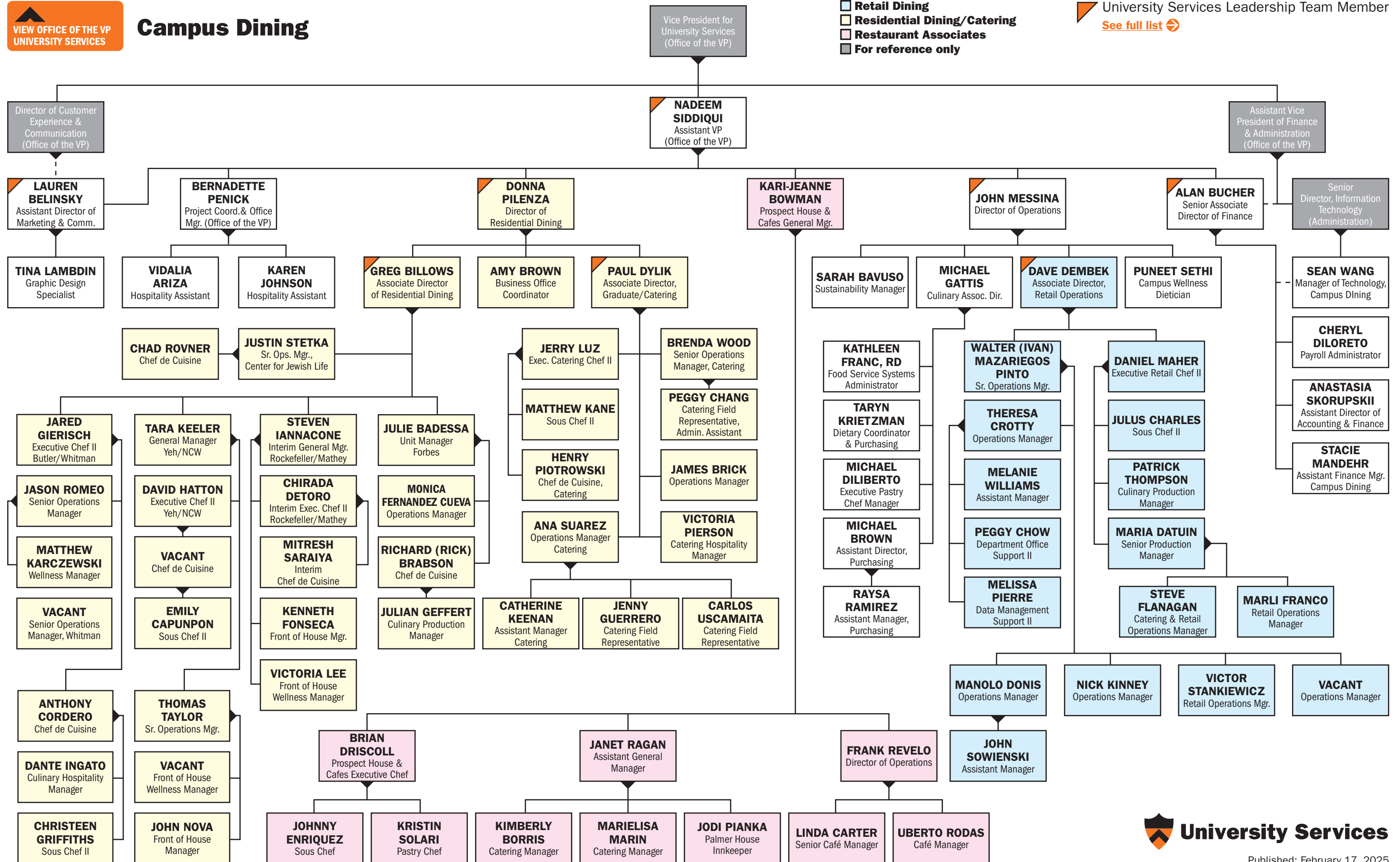
 University Services Leadership Team Member
[See full list](#) 

 For reference only



Campus Dining

- Retail Dining
- Residential Dining/Catering
- Restaurant Associates
- For reference only

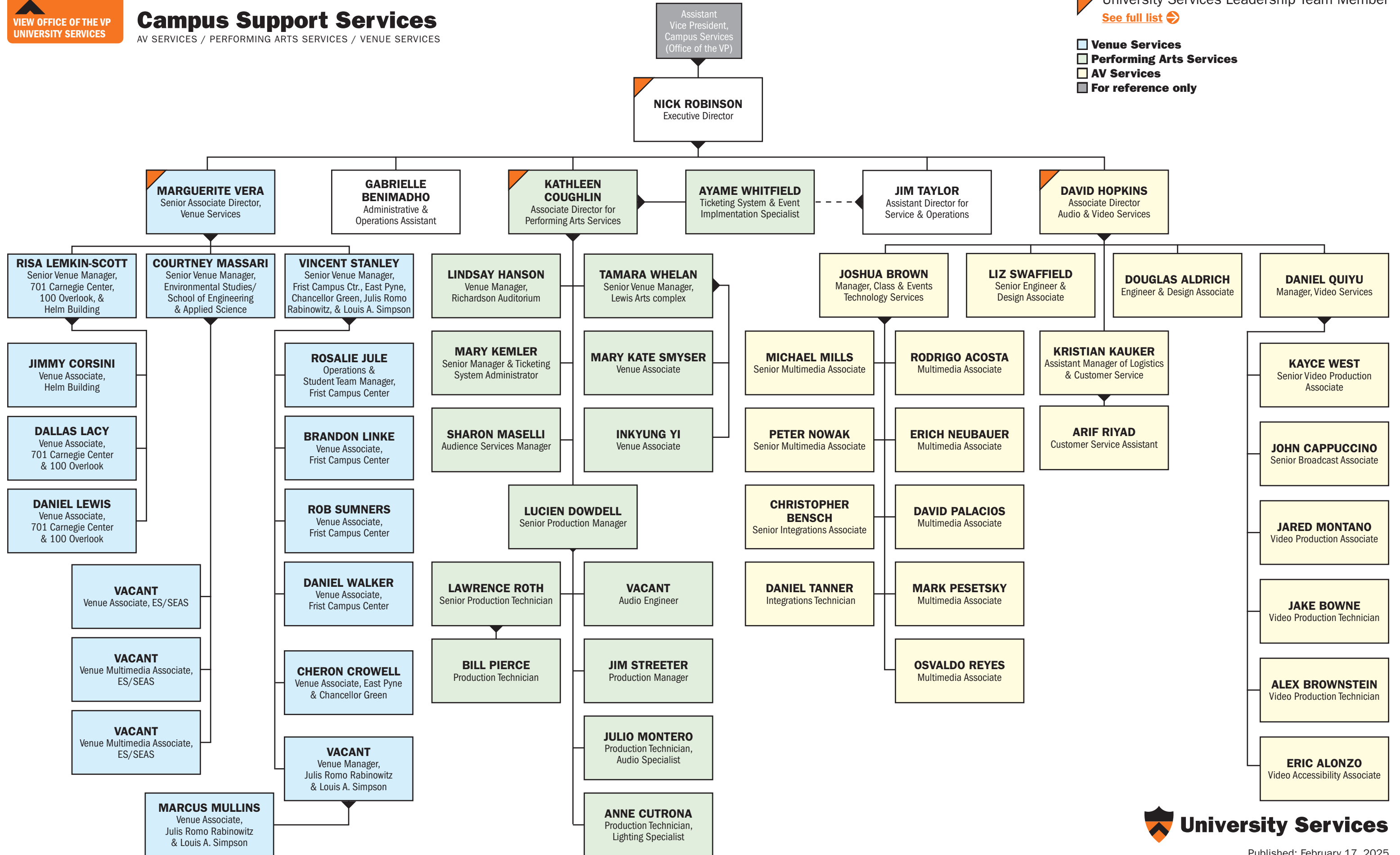


Campus Support Services

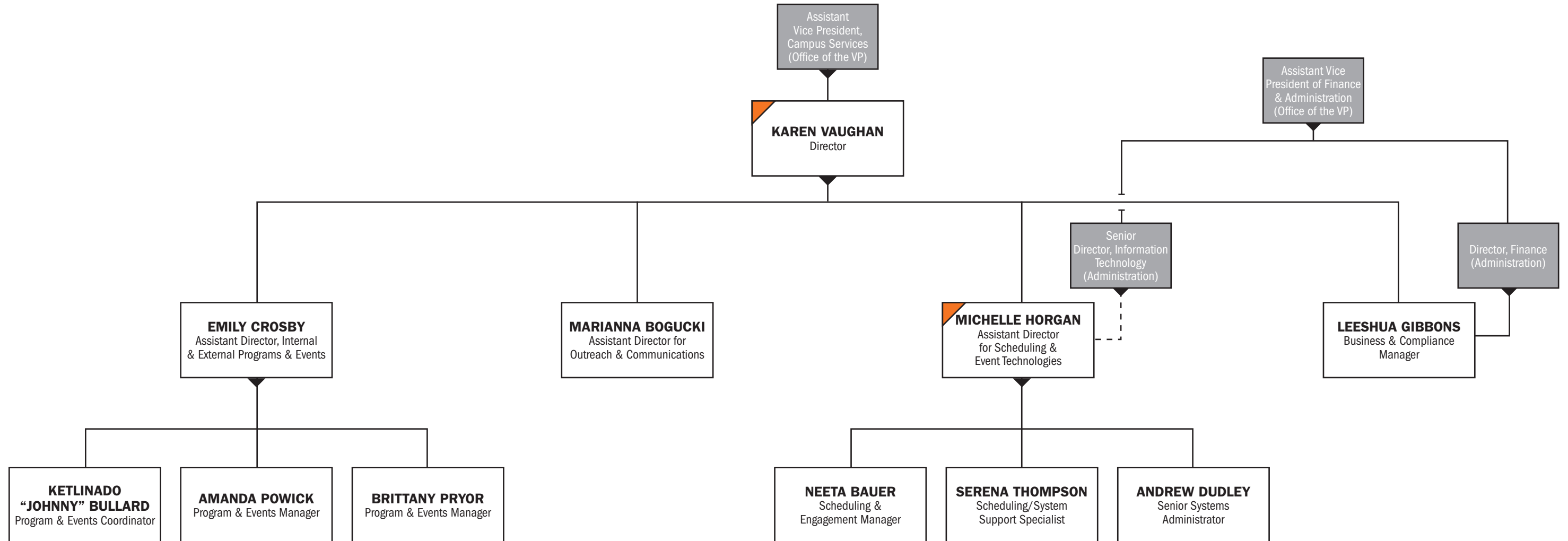
AV SERVICES / PERFORMING ARTS SERVICES / VENUE SERVICES

[See full list](#)

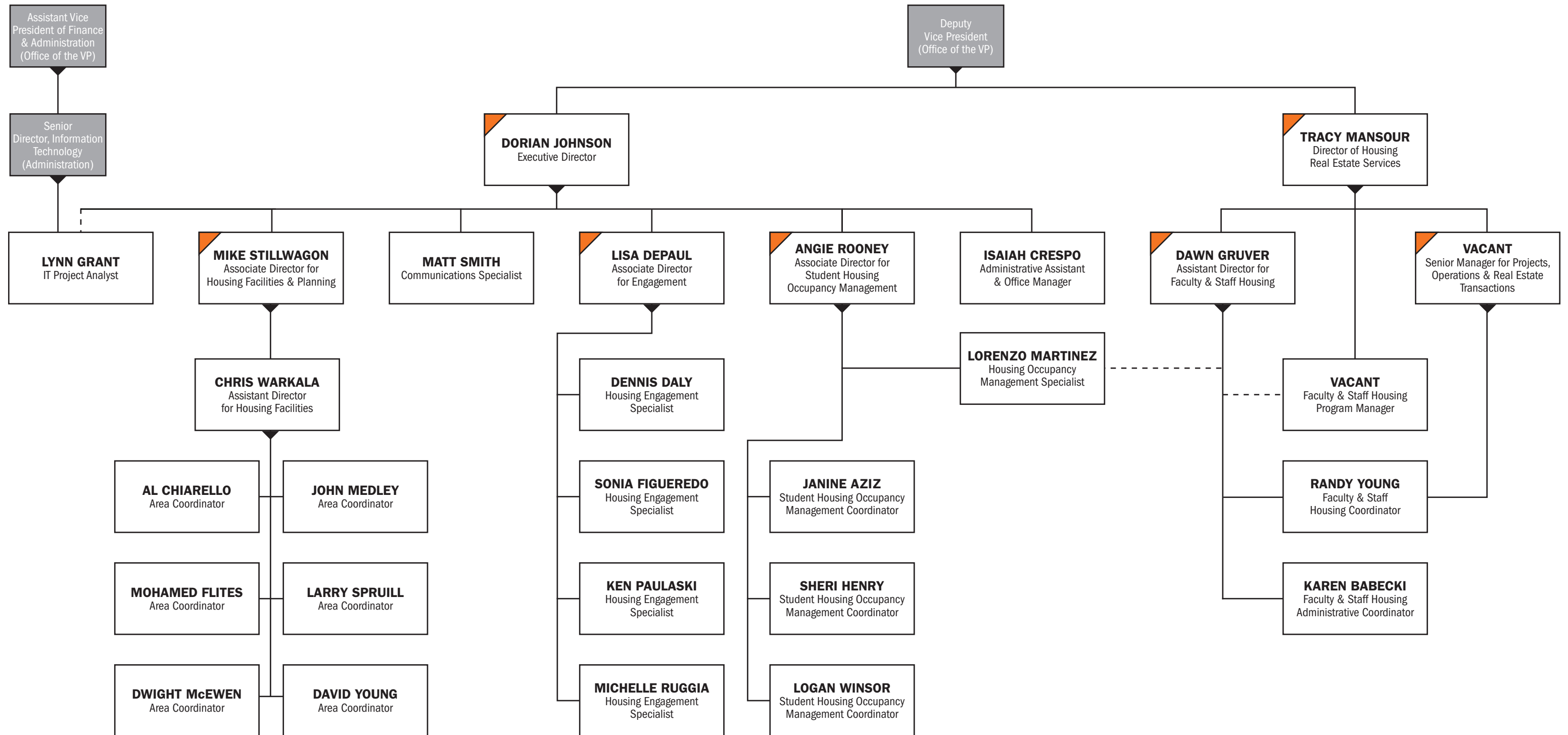
- Venue Services
- Performing Arts Services
- AV Services
- For reference only



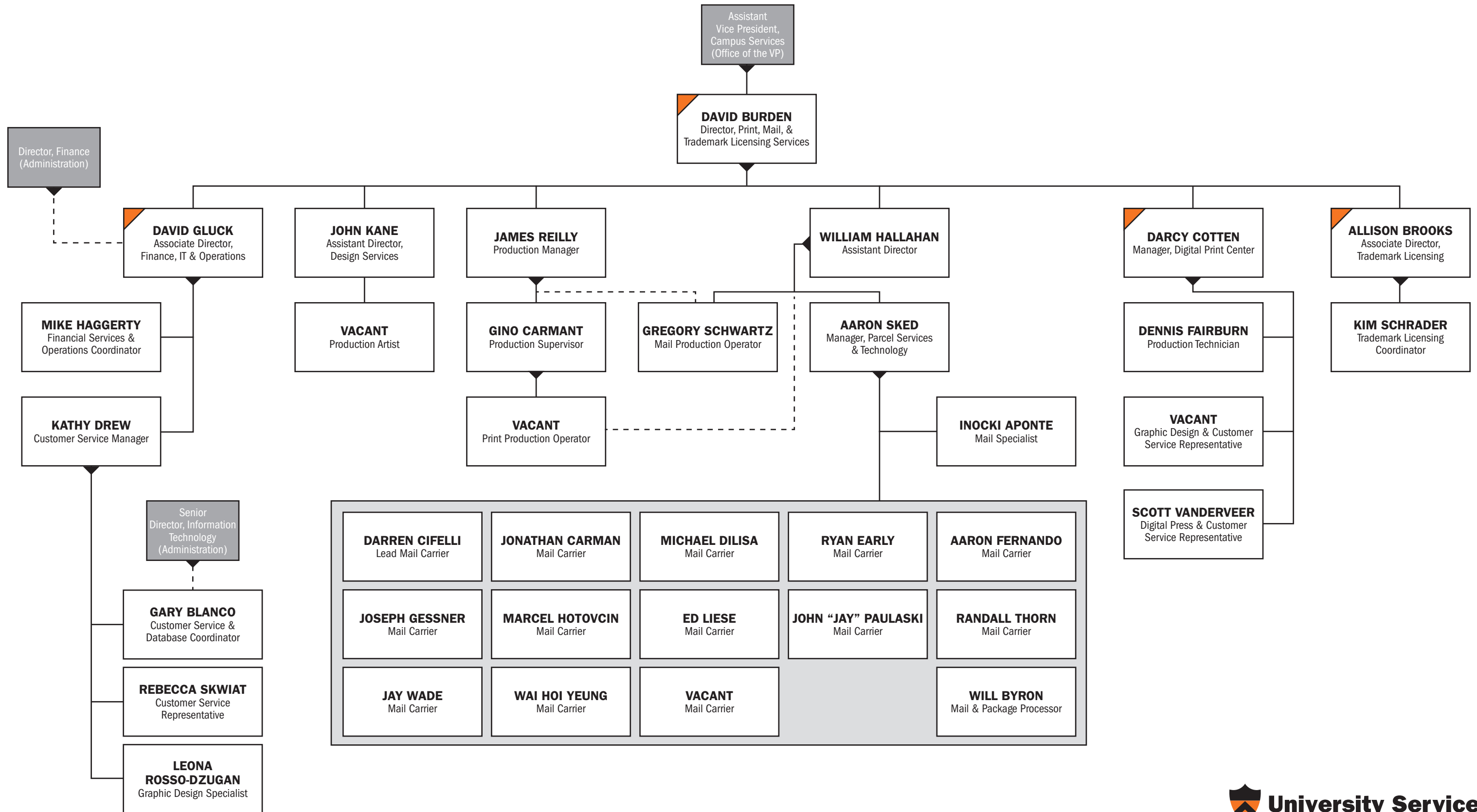
Conference & Event Services



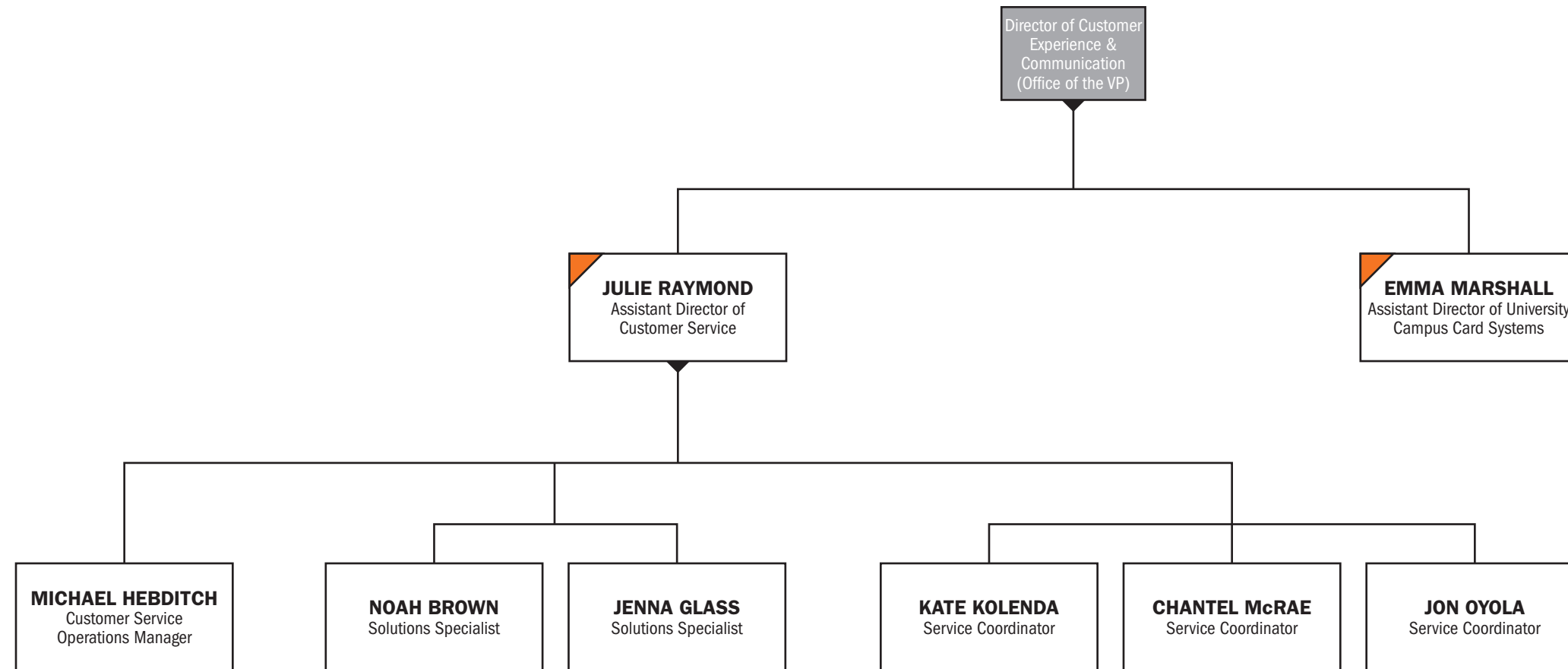
Housing & Real Estate Services



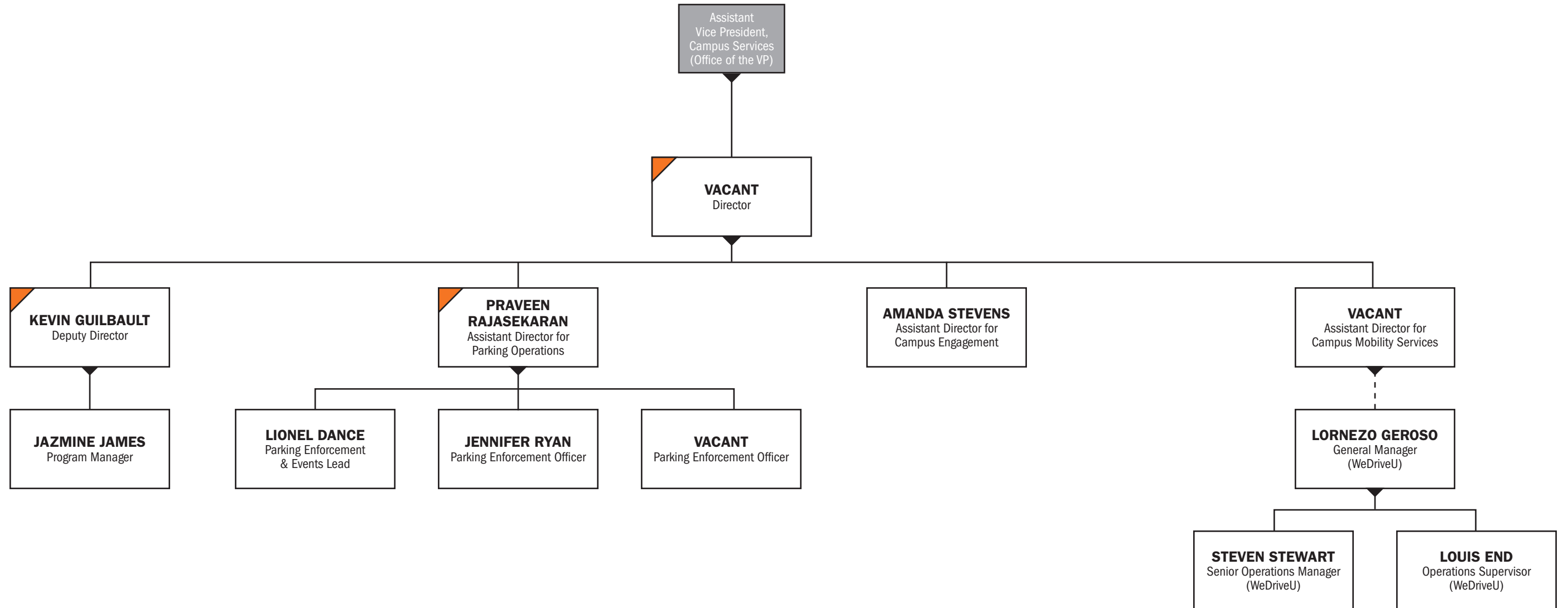
Print, Mail, & Trademark Licensing Services



The Service Point/TigerCard



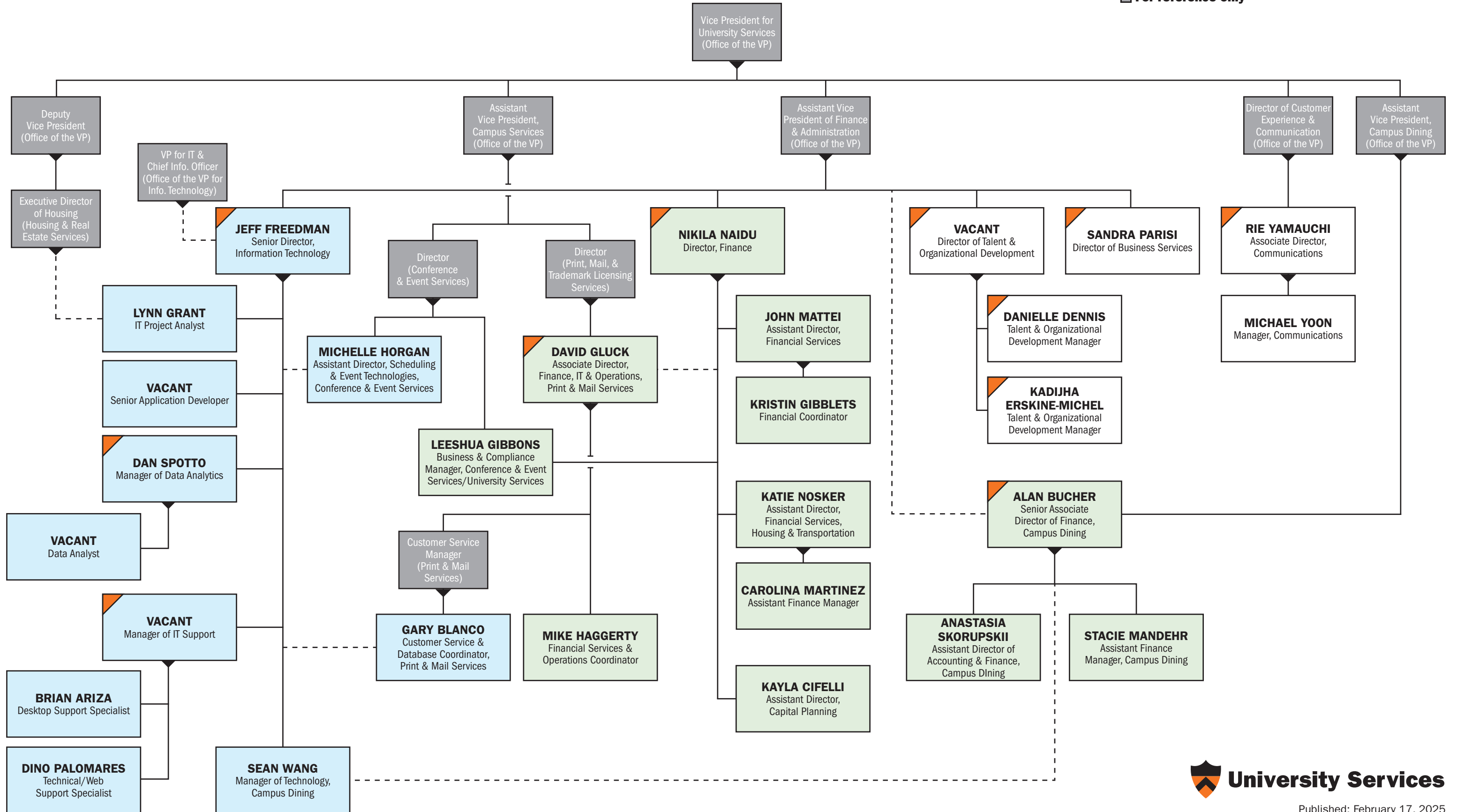
Transportation & Parking Services



University Services Administration

BUSINESS SERVICES / COMMUNICATIONS / FINANCE / INFORMATION TECHNOLOGY / TALENT & ORGANIZATIONAL DEVELOPMENT

-  Finance
-  Information Technology
-  For reference only



University Services Leadership Team

Office of the VP [ORG CHART](#)

DEBBY FOSTER, Deputy Vice President

ERIC HAMBLIN, Director for Campus Connections

CHAD KLAUS, Vice President

BRETT LAWRENCE, Executive Assistant & Office Manager

CHRIS LENTZ, Director of Customer Experience & Communication

MAUREEN McWHIRTER, Assistant Vice President of Finance & Administration

NADEEM SIDDIQUI, Assistant Vice President, Campus Dining

CHARLES TENNYSON, Assistant Vice President, Campus Services

Campus Dining [ORG CHART](#)

LAUREN BELINSKY, Assistant Director of Marketing & Communications

GREGORY BILLOWS, Associate Director, Residential Dining

ALAN BUCHER, Senior Associate Director of Finance, Campus Dining

DAVID DEMBEK, Associate Director of Retail Operations

PAUL DYLIK, Associate Director, Graduate College/Catering

JOHN MESSINA, Director of Operations

DONNA PILENZA, Director of Residential Dining

Campus Support Services [ORG CHART](#)

KATHLEEN COUGHLIN, Associate Director, Performing Arts Services

DAVID HOPKINS, Associate Director of Audio & Video Services

NICK ROBINSON, Executive Director, Campus Support Services

MARGUERITE VERA, Senior Associate Director, Venue Services

Conference & Event Services [ORG CHART](#)

MICHELLE HORGAN, Assistant Director for Scheduling & Event Technologies

KAREN VAUGHAN, Director

Housing & Real Estate Services [ORG CHART](#)

LISA DEPAUL, Associate Director for Engagement

DAWN GRUVER, Assistant Director for Faculty & Staff Housing

DORIAN JOHNSON, Executive Director for Housing

TRACY MANSOUR, Director of Housing Real Estate Services

ANGIE ROONEY, Associate Director for Student Housing Occupancy Management

MIKE STILLWAGON, Associate Director for Housing Facilities & Planning

VACANT, Senior Manager for Housing Projects, Operations & Real Estate Transactions

Print, Mail, & Trademark Licensing Services [ORG CHART](#)

ALLISON BROOKS, Associate Director of Trademark Licensing

DAVID BURDEN, Director of Print, Mail, & Trademark Licensing Services

DARCY COTTEN, Manager, Digital Print Center

DAVID GLUCK, Associate Director, Finance, IT & Operations

The Service Point & TigerCard [ORG CHART](#)

EMMA MARSHALL, Assistant Director of University Campus Card Systems

JULIE RAYMOND, Assistant Director of Customer Service

Transportation & Parking Services [ORG CHART](#)

KEVIN GUILBAULT, Deputy Director

PRAVEEN RAJASEKARAN, Assistant Director for Parking Operations

VACANT, Director

University Services Administration [ORG CHART](#)

DANIELLE DENNIS, Talent & Organizational Development Manager

KADIJHA ERSKINE-MICHEL, Talent & Organizational Development Manager

JEFF FREEDMAN, Senior Director, Information Technology

NIKILA NAIDU, Director, Finance

SANDRA PARISI, Director of Business Services

DAN SPOTTO, Manager of Data Analytics

RIE YAMAUCHI, Associate Director for Communications

VACANT, Director of Talent & Organizational Development

VACANT, Manager of IT Support