



University Services

CLICK ON A DEPARTMENT BELOW TO VIEW ITS ORGANIZATION CHART

[Office of the Vice President](#)

[Campus Dining](#)

[Campus Support Services](#)

[Conference & Event Services](#)

[Housing & Real Estate Services](#)

[Print, Mail, & Trademark Licensing Services](#)


[The Service Point/
TigerCard](#)



[Transportation & Parking Services](#)

[University Services Administration](#)

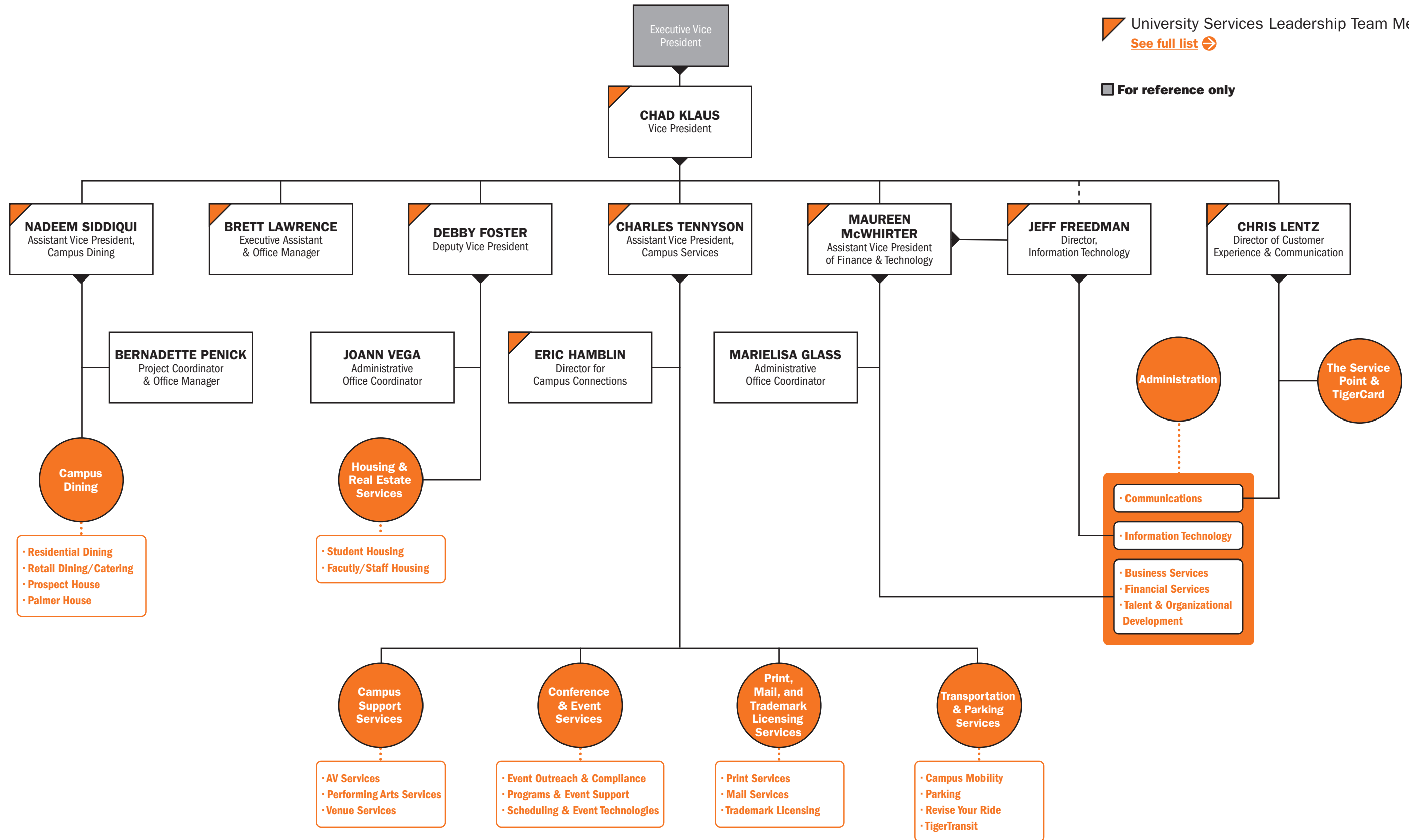
[UNIVERSITY SERVICES LEADERSHIP TEAM DIRECTORY](#)

Office of the Vice President

 University Services department
Click to see department-level organization chart

 University Services Leadership Team Member
[See full list](#) 

 For reference only

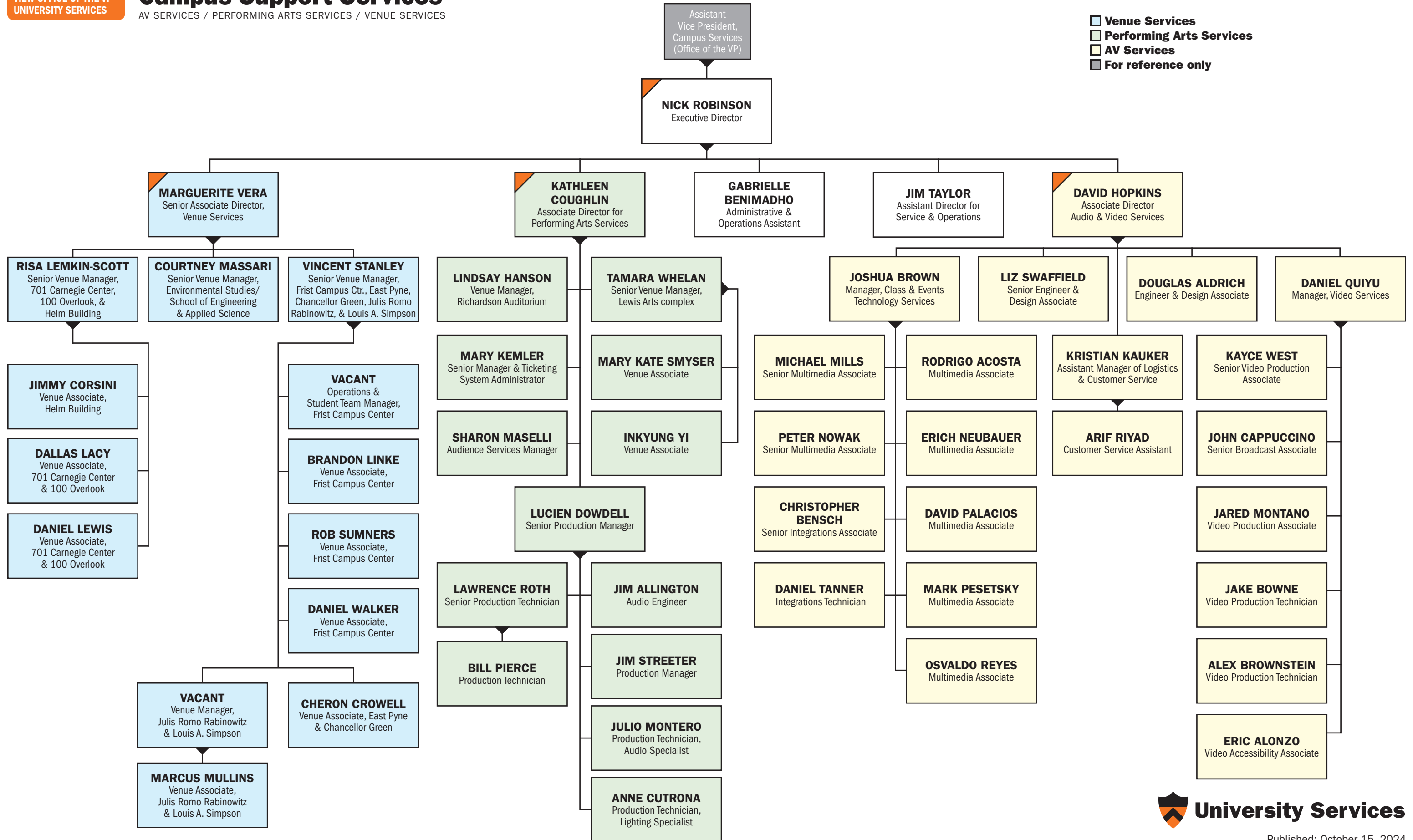


Campus Support Services

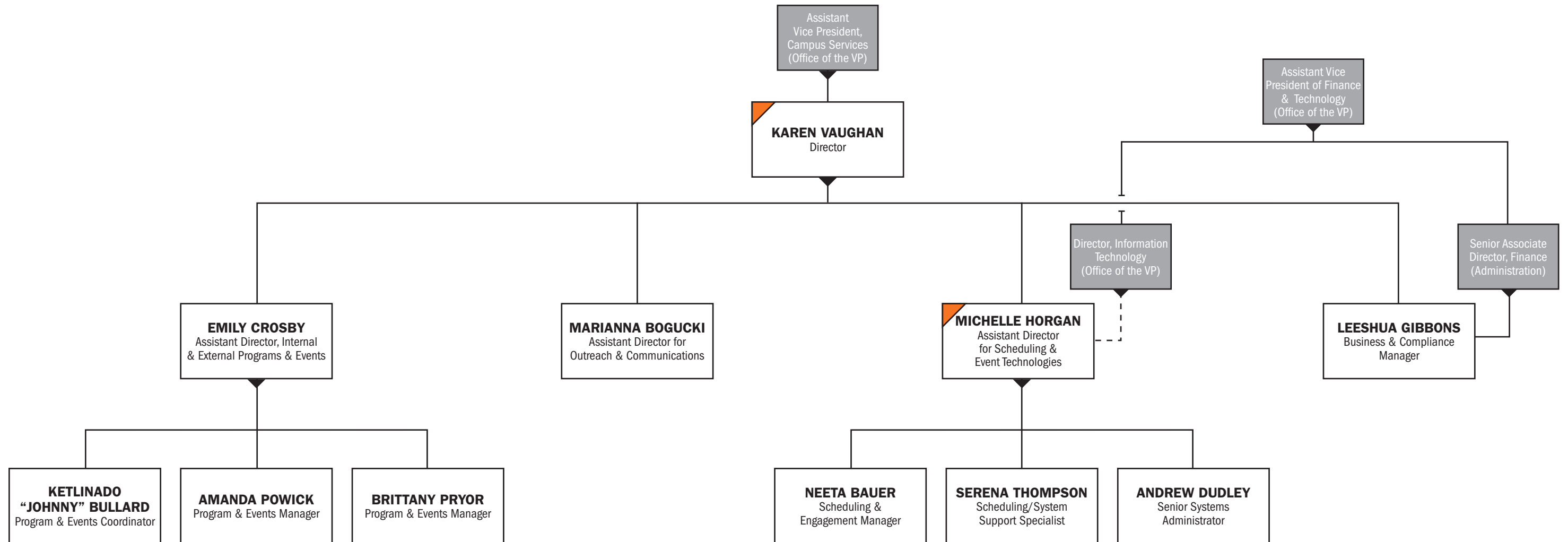
AV SERVICES / PERFORMING ARTS SERVICES / VENUE SERVICES

[See full list](#)

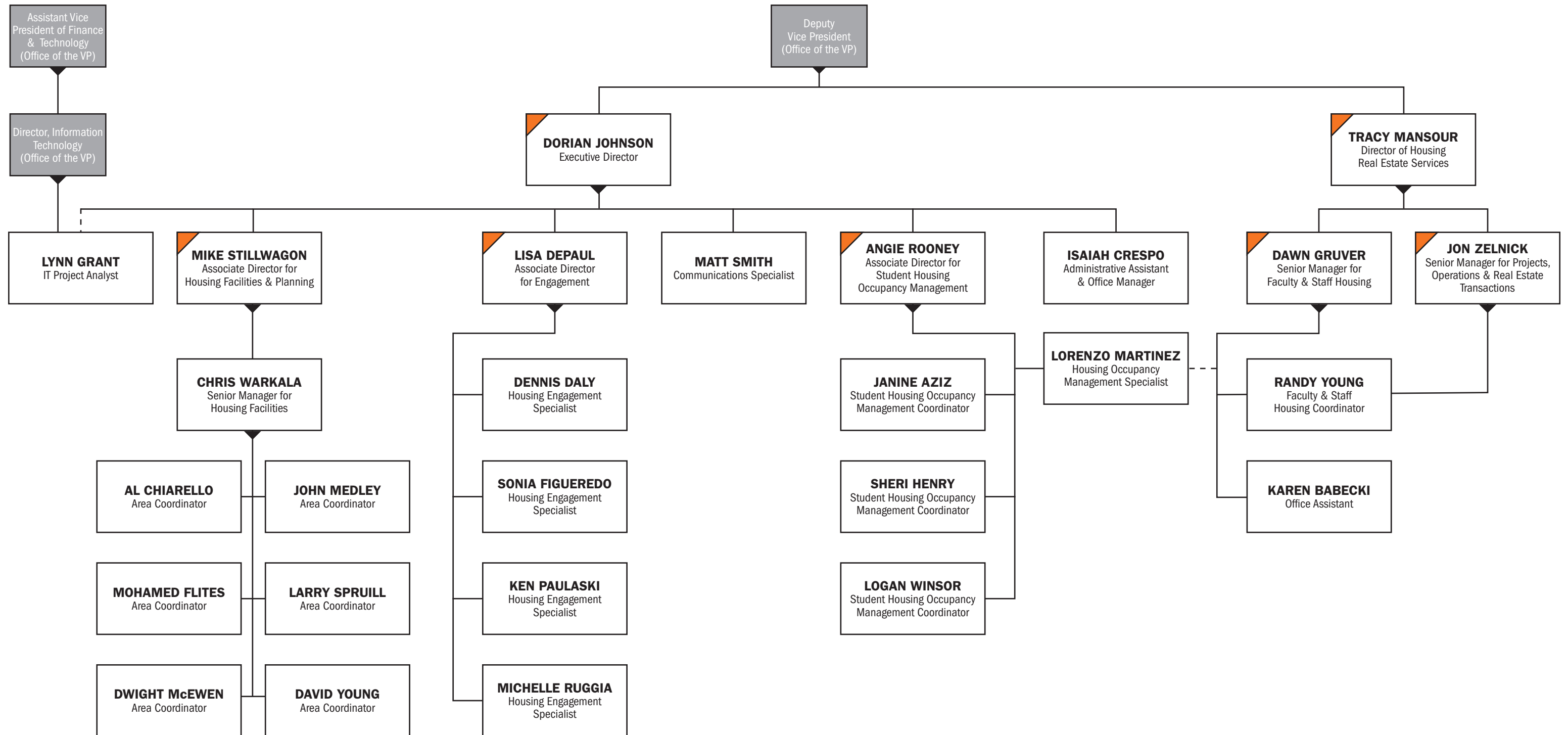
- Venue Services
- Performing Arts Services
- AV Services
- For reference only



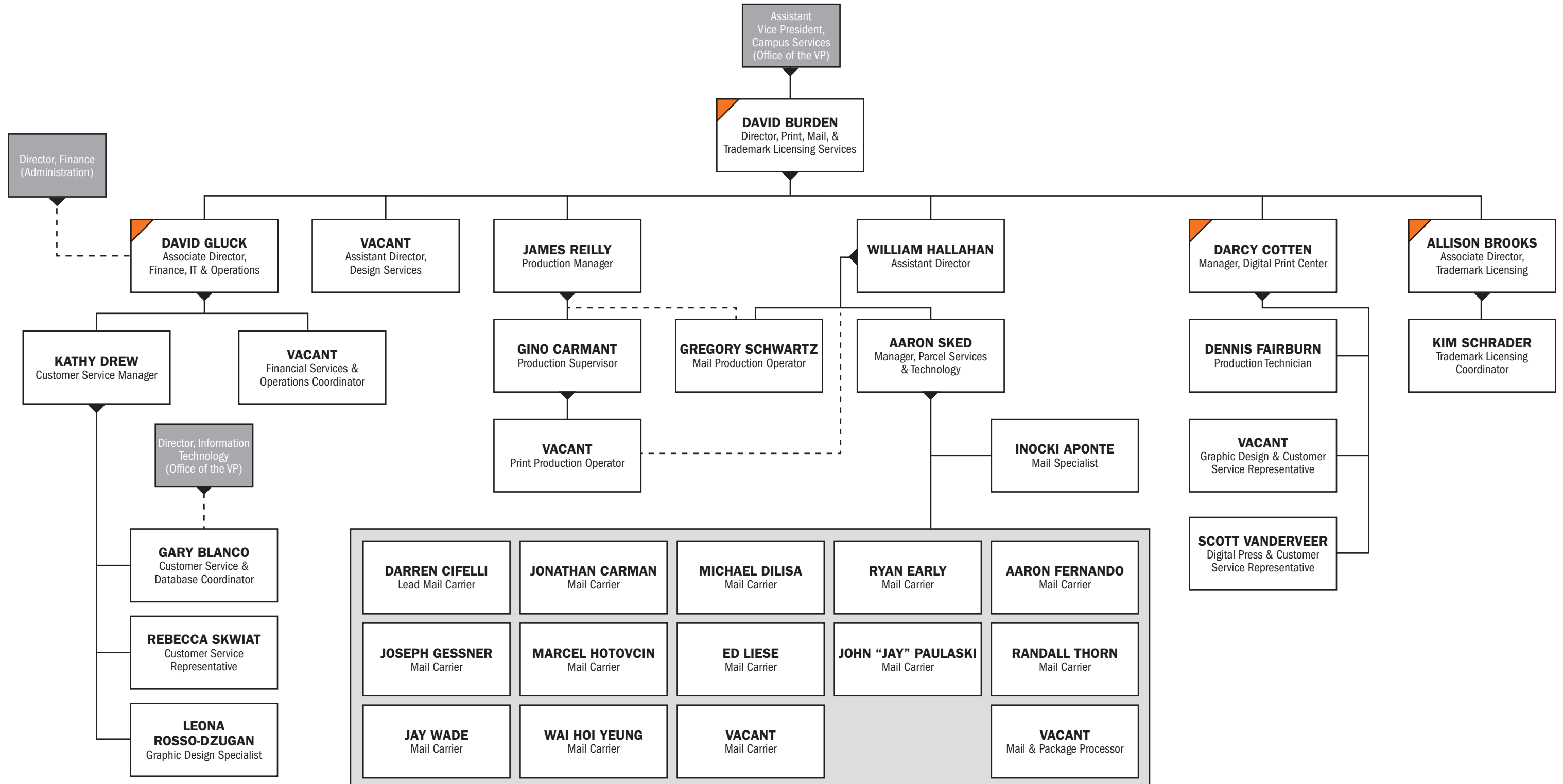
Conference & Event Services



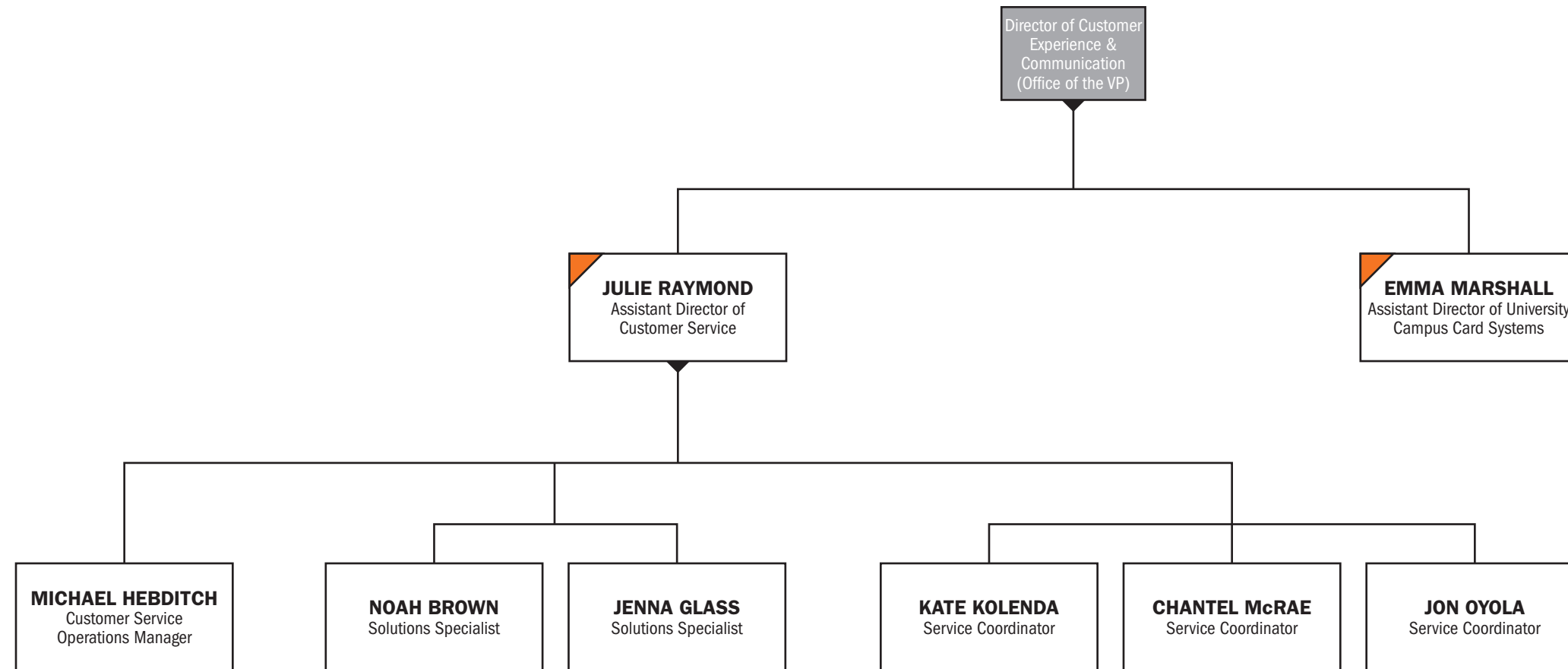
Housing & Real Estate Services



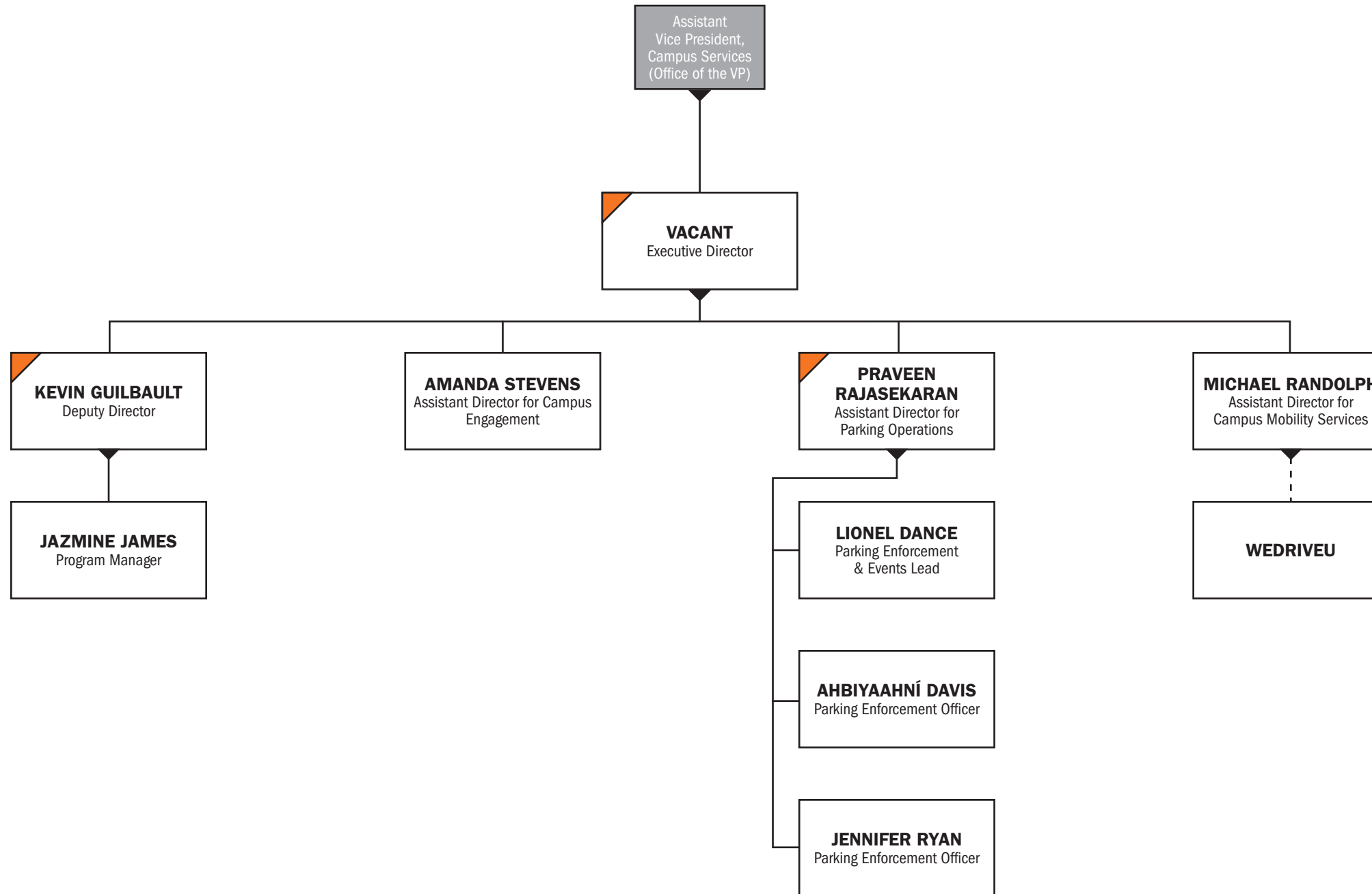
Print, Mail, & Trademark Licensing Services



The Service Point/TigerCard



Transportation & Parking Services



University Services Leadership Team

Office of the VP [ORG CHART](#)

DEBBY FOSTER, Deputy Vice President
JEFF FREEDMAN, Director, Information Technology
ERIC HAMBLIN, Director for Campus Connections
CHAD KLAUS, Vice President
BRETT LAWRENCE, Executive Assistant & Office Manager
CHRIS LENTZ, Director of Customer Experience & Communication
MAUREEN McWHIRTER, Assistant Vice President of Finance & Technology
NADEEM SIDDIQUI, Assistant Vice President, Campus Dining
CHARLES TENNYSON, Assistant Vice President, Campus Services

Campus Dining [ORG CHART](#)

LAUREN BELINSKY, Assistant Director of Marketing & Communications
GREGORY BILLOWS, Associate Director, Residential Dining
ALAN BUCHER, Senior Associate Director of Finance, Campus Dining
DAVID DEMBEK, Associate Director of Retail Operations
PAUL DYLIK, Associate Director, Graduate College/Catering
JOHN MESSINA, Director of Operations
DONNA PILENZA, Director of Residential Dining

Campus Support Services [ORG CHART](#)

KATHLEEN COUGHLIN, Associate Director, Performing Arts Services
DAVID HOPKINS, Associate Director of Audio & Video Services
NICK ROBINSON, Executive Director, Campus Support Services
MARGUERITE VERA, Senior Associate Director, Venue Services

Conference & Event Services [ORG CHART](#)

MICHELLE HORGAN, Assistant Director for Scheduling & Event Technologies
KAREN VAUGHAN, Director

Housing & Real Estate Services [ORG CHART](#)

LISA DEPAUL, Associate Director for Engagement
DAWN GRUVER, Senior Manager for Faculty & Staff Housing
DORIAN JOHNSON, Executive Director for Housing
TRACY MANSOUR, Director of Housing Real Estate Services
ANGIE ROONEY, Associate Director for Student Housing Occupancy Management
MIKE STILLWAGON, Associate Director for Housing Facilities & Planning
JON ZELNICK, Senior Manager for Housing Projects, Operations & Real Estate Transactions

Print, Mail, & Trademark Licensing Services [ORG CHART](#)

ALLISON BROOKS, Associate Director of Trademark Licensing
DAVID BURDEN, Director of Print, Mail, & Trademark Licensing Services
DARCY COTTEN, Manager, Digital Print Center
DAVID GLUCK, Associate Director, Finance, IT & Operations

The Service Point & TigerCard [ORG CHART](#)

EMMA MARSHALL, Assistant Director of University Campus Card Systems
JULIE RAYMOND, Assistant Director of Customer Service

Transportation & Parking Services [ORG CHART](#)

KEVIN GUILBAULT, Deputy Director
PRAVEEN RAJASEKARAN, Assistant Director for Parking Operations
VACANT, Executive Director

University Services Administration [ORG CHART](#)

DOMINIQUE DAVIS, Manager of IT Support
DANIELLE DENNIS, Talent & Organizational Development Manager
KADIJHA ERSKINE-MICHEL, Talent & Organizational Development Manager
NIKILA NAIDU, Director, Finance
SANDRA PARISI, Director of Business Services
DAN SPOTTO, Manager of Data Analytics
RIE YAMAUCHI, Associate Director for Communications
VACANT, Director of Talent & Organizational Development